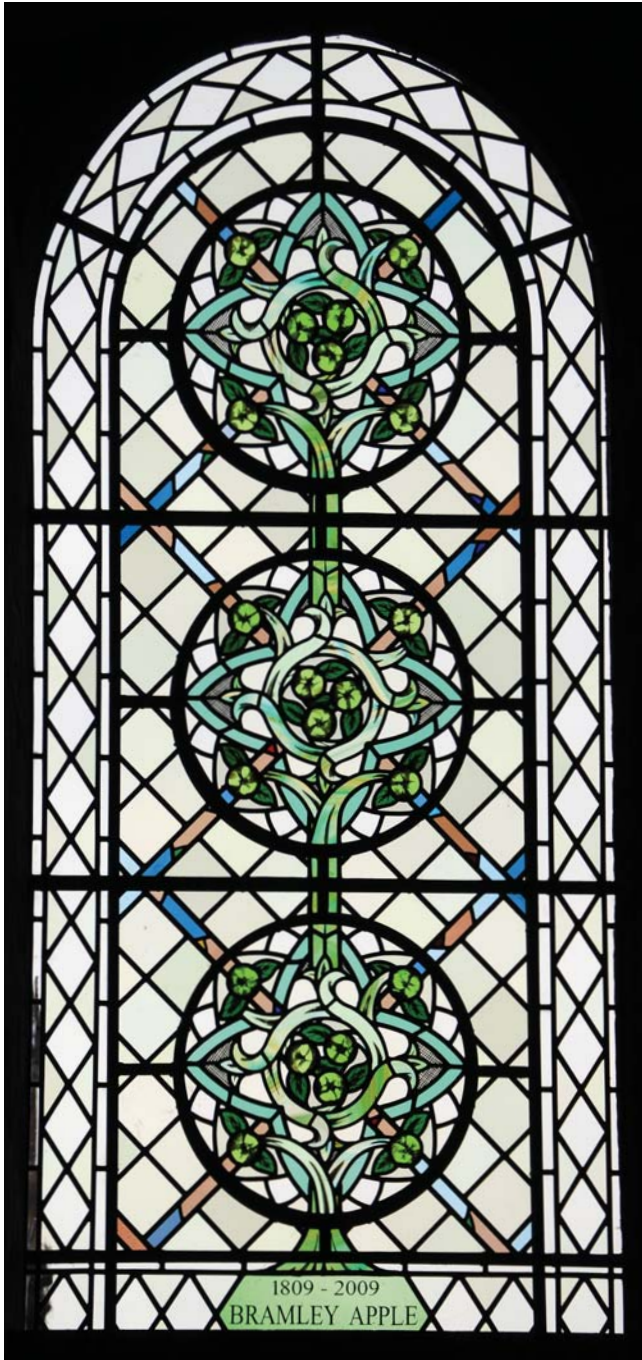




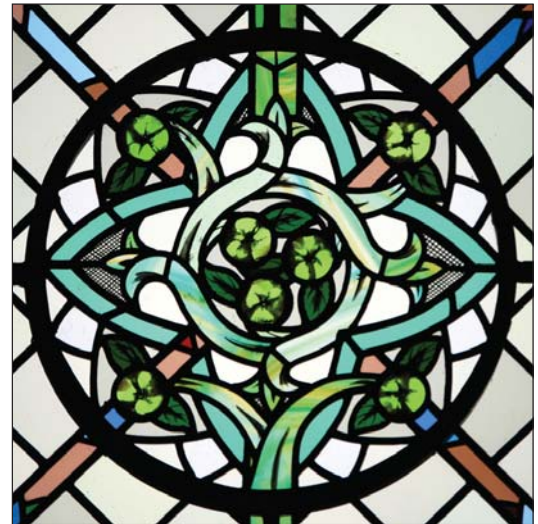
SOUTHWELL MINSTER NOTTINGHAMSHIRE

Bicentenary window celebrating the Bramley Apple
North Transept - West Wall (1.2m x 2.5m) 2009



In 1998, Helen Whittaker of Barley Studio was commissioned to design sixteen windows for the North and South transepts of Southwell Minster. Divided into sets of four, each set contained individual stained glass medallions. In 2009, to mark the bicentenary of the creation of the Bramley Apple and to incorporate this significant part of Southwell's history, one set was re-designed.

In the new design Bramley apples replace the bulls in the interwoven geometric medallions to give a sense of pinning the knotwork together in a tree-like formation. The combination of the apple and geometric branches suggests the Tree of Life. The apples are emphasized by the existing subtle tints of pink, blue, yellow and green lattice-work set against a background of tinted white glass.



Detail: Geometric Medallion

Helen Whittaker
STAINED GLASS
& SCULPTURE

